

FJ-AGRO_{APS}

SMEDEMESTEREN APS

FJ-AGRO

THE BEST CHOICE!

We guarantee quality and good workmanship.



FJ-Agro

Feeding Table Gate, Crowd Gate

Animal Stretcher, Twin Wheel Barrow



FJ Crowd Gate FJ 180 SH Flex

With the most robust crowd gate on the market you achieve:

- No unnecessary waiting by milking
- Even flow to the parlour = calm cows
- Timesaving on cleaning due to the manure scraper



Crowd Gate

With a FJ Crowd Gate you get:

- Extra strong hot-dipped galvanized construction
- Scraper divided in sections (for better cleaning)
- Cast iron drive wheels (vulcanized)
- Cast iron guide wheels (vulcanized)
- Strong I-beam rail
- A custom build crowd gate fitted to your holding pen
- Low building height
- Lifting gate with 180 cm clearance



Gate hoist and rubber scrape

Strong hot-dipped galvanized construction



With a FJ Crowd Gate you have:

- The most flexible PLC control
- Alarm when moving forward
- Free of choice placing of control panel
- Optional remote control possibility to divide cows in teams
- Variable speed on forward, return and scraper function
- Overload monitoring on the drive engine

Technique:

When the FJ Crowd Gate is set on "Automatic Control" the forward movement of the gate is controlled by counters placed on the entry gates. The gate automatically moves forward according to the number of cows passing through the gates. For safety the FJ Crowd Gate FJ180SH Flex is equipped with motor brake. The speed is variable which means that it can be set to move at various speeds depending on whether it is driving cattle forward, going back or scraping the floor after milking.



Operation Panel



Remote Control

FJ Feeding Table Gate FJ 100



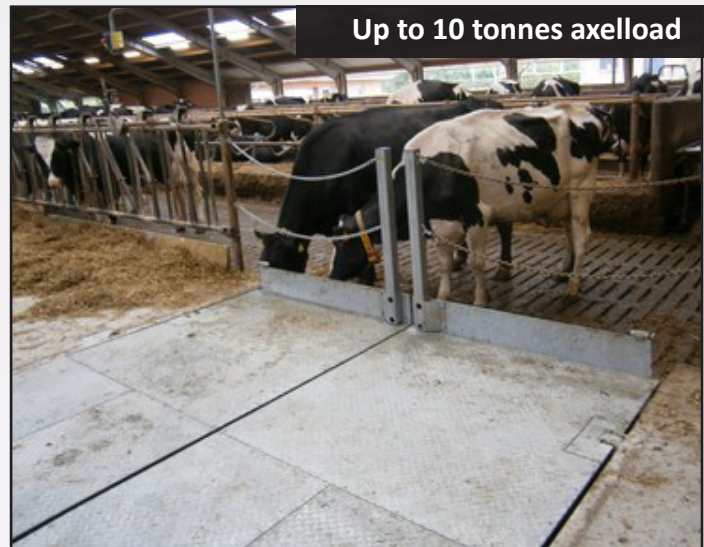
Feeding Table Gate

With the most carefully constructed Feeding Table gate on the market you achieve:

- Easy moving of cows to the parlour
- Clean feeding table since the cows do not have to cross over it.
- Low maintenance
- Control panels placed on both sides of the feeding table

With at FJ Feeding Table Gate you get:

- Strong hot-dipped galvanized construction
- Non-skid diamond plate
- Stainless steel shafts in hinges
- Replaceable PCM bushings in hinges
- Hydraulic pump and control unit build in the gate with service friendly maintenance cover
- 400 volt hydraulic unit
- Rugged hydraulic cylinders and tubes mounted in the gate
- 1 hydraulic pump for each gate
- Fast opening – approx. 15 sec.
- U-friendly controls



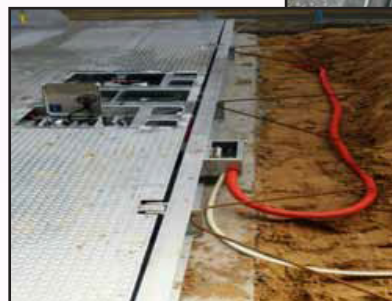
Up to 10 tonnes axelload



Control Panel

By mounting of a FJ Feeding Table Gate:

- The Feeding Table Gate is embedded in the concrete floor
- All cables is embedded in the floor in a tube so they can not be damage by manure, animals or machines



Control and hydraulic unit



Animal Stretcher



Product description:

- Strong hot-dipped galvanized construction
- Easy transport of sick/dead animals
- Easy cleaning due to „open” construction
- Low loading height
- Detachable front wheels/ pulling handle
- Inflated wheels with ball bearings

Dimensions:

- | | |
|----------------------------------|--------------|
| • Length (excl. pulling handle): | 240cm |
| • Width: | 70cm |
| • Loading height: | 7 cm |

For better durability, it has also been galvanized.



Twin Wheel Barrow



Product description:

- Strong hot-dipped galvanized construction
- With tilt function
- Strong hot-dipped galvanized construction
- Can be made with lower back wall
- Total length: 186cm
- Total height: 88 cm
- Tray length: 140 cm
- Tray height: 43 cm
- Tray width: 85 cm



Contact information:

The office is open from Monday to Friday from 7:00 to 16:00. It is closed during weekends.

Visit our website: www.fj-agro.dk

Address:

Vandmosevej 6
7250 Hejnsvig
Danmark
Fax : (0045) 75 33 62 70

Owner:

Finn Jørgensen
(0045) 75 33 52 70
fj@fj-agro.dk

Sales Manager:

Kim Weber
(0045) 41 24 39 73
kw@fj-agro.dk